



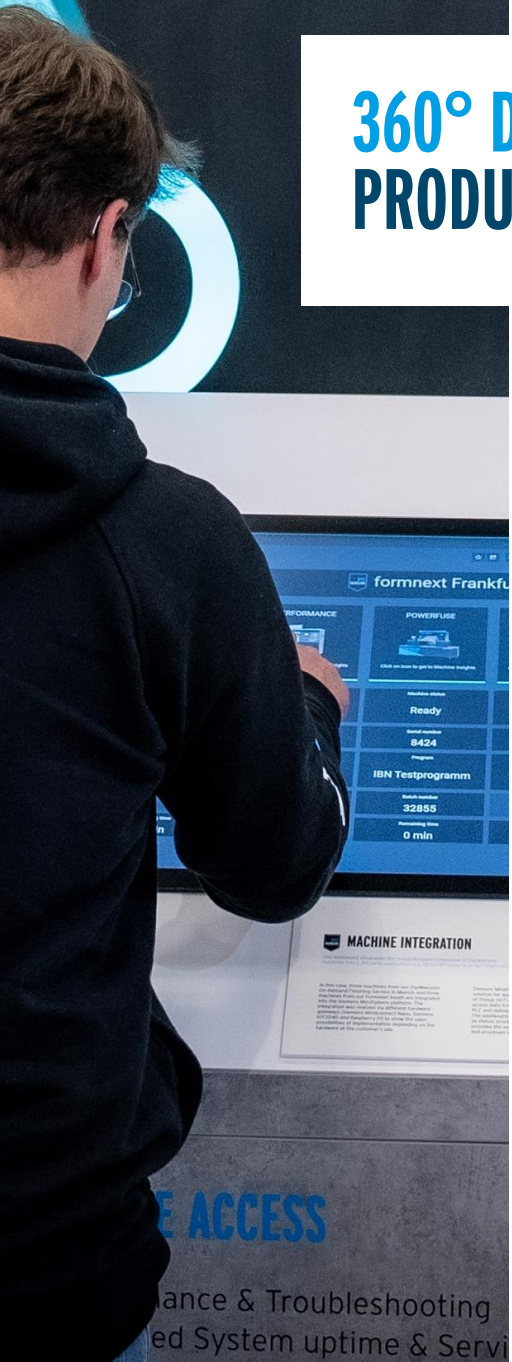
DYEMANSION 360° DIGITAL SERVICES

PRODUCT OVERVIEW

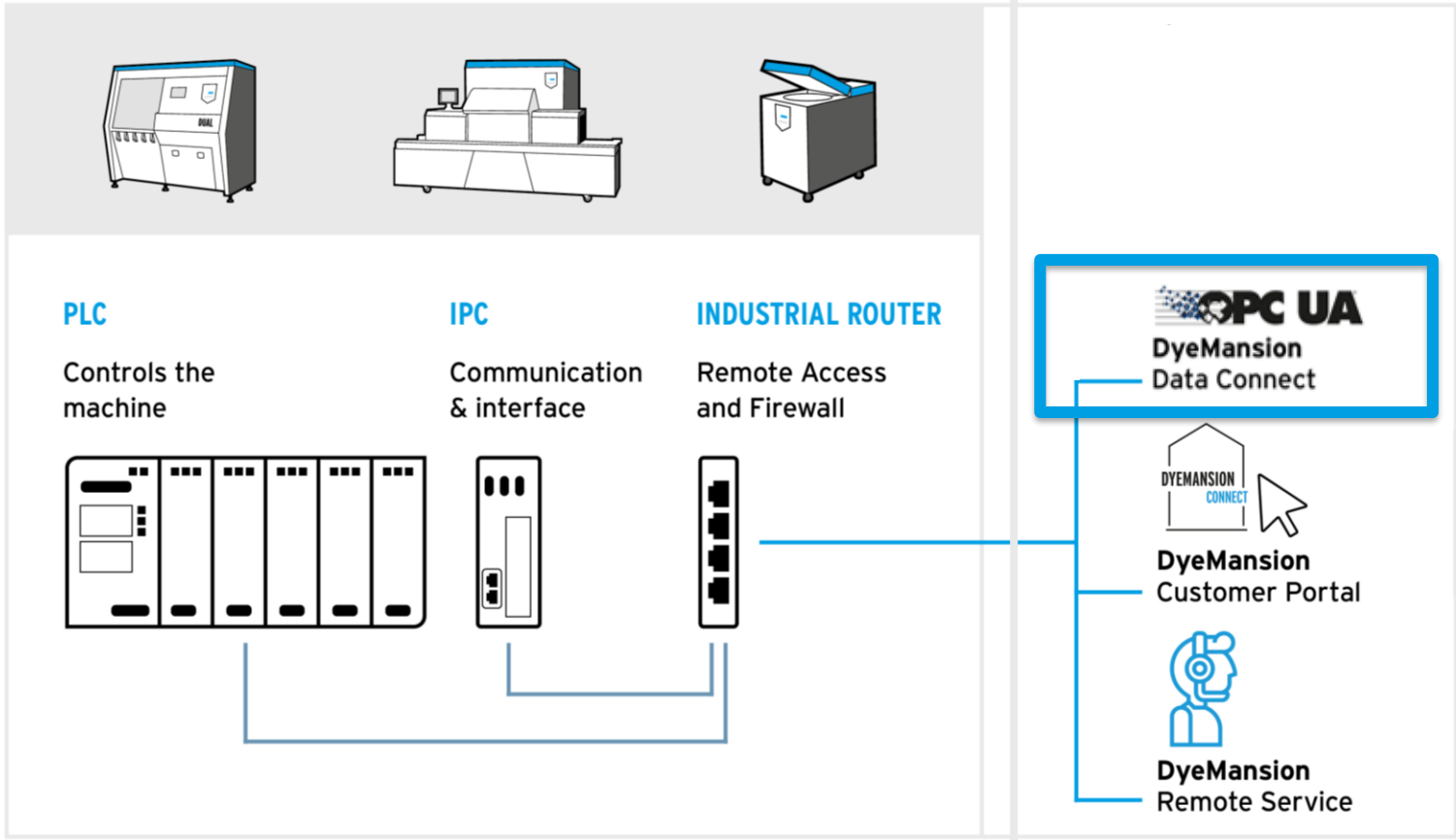


DyeMansion
Data Connect

360° DIGITAL SERVICES PRODUCT OVERVIEW



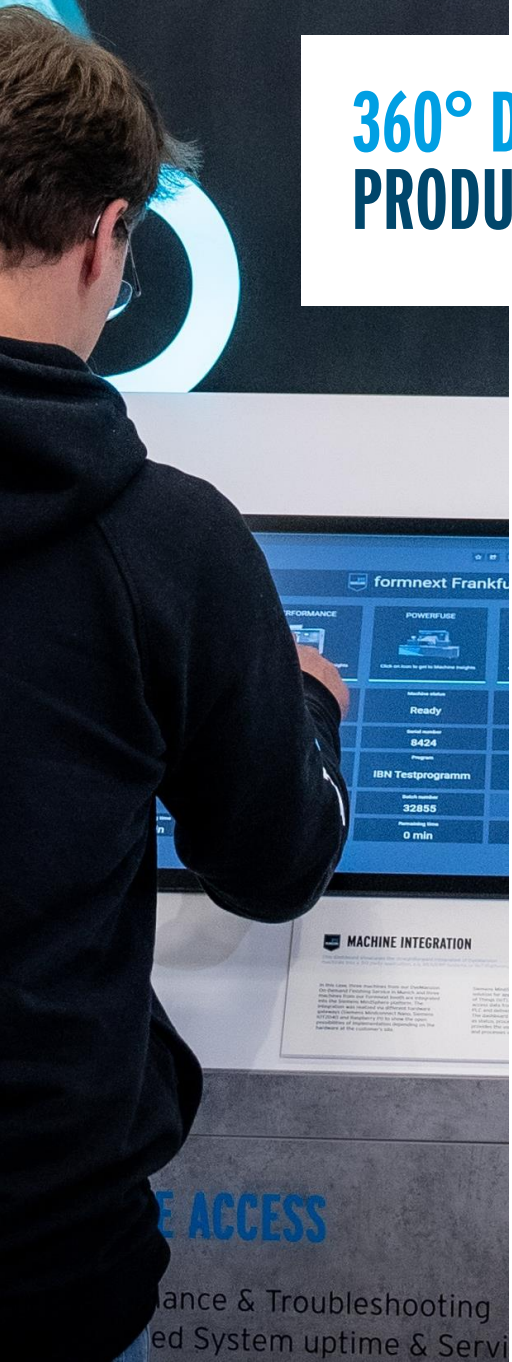
DyeMansion 360° Digital Services



ACCESS

ance & Troubleshooting
ed System uptime & Servi

360° DIGITAL SERVICES PRODUCT OVERVIEW



DyeMansion Data Connect

- ✓ Local data interface
- ✓ Machine & process data access

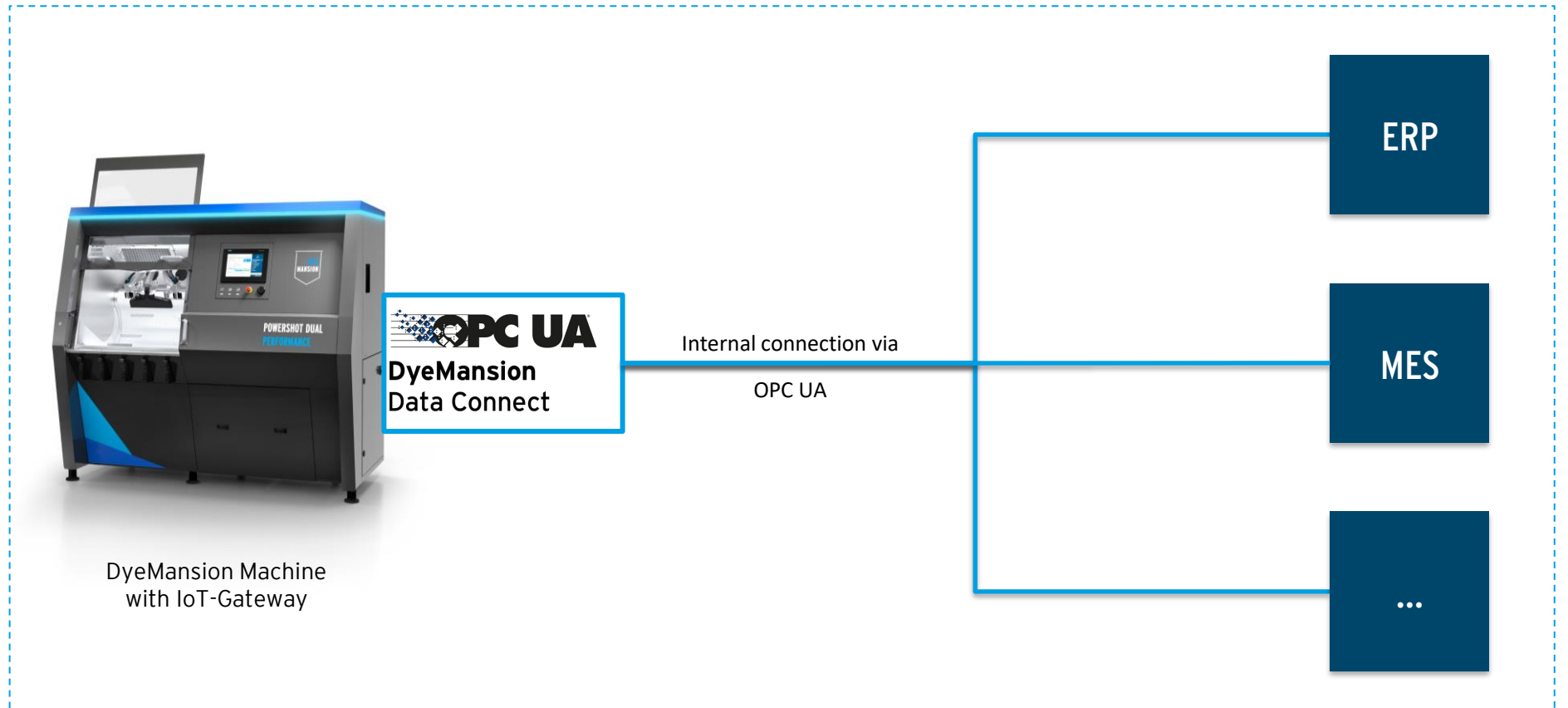
ACCESS

ance & Troubleshooting
ed System uptime & Servi

OPC UA
DyeMansion
Data Connect

DATA CONNECT OVERVIEW

Data Connect is an industrial API (application programming interface) that offers data access via the OPC UA standard.



DyeMansion Machine
with IoT-Gateway

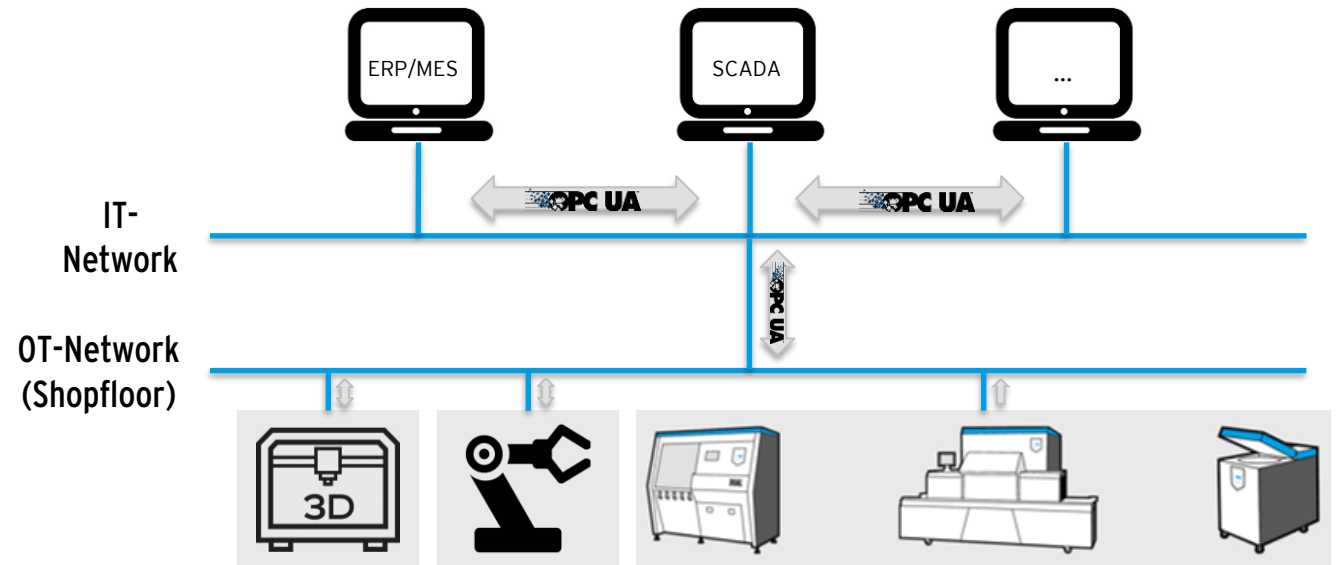


DATA CONNECT TECHNICAL FACTS

Data Connect is an industrial API (application programming interface) that offers data access via the OPC UA standard.

OPC UA EXPLAINED:

- ✓ It specifies information exchange for industrial communication.
- ✓ It is scalable from simple machine-to-machine communication to a complete digital shopfloor (until now only one way).
- ✓ It provides security via access control and authentication.
- ✓ It is a standard in the production industry.



DATA CONNECT KEY VALUES

We offer Data Connect for a customer who wants to set up a complete digital shopfloor or needs first digital connectivity.



SIMPLIFIED INTEGRATION

The standardized industrial interface based enables easy and secure integration of our Print-to-Product workflow.



DETAILED DATA

The complete set of data allows deeper insights into the DyeMansion machines, for quality control and monitoring.



HIGH COMPATIBILITY

The cooperation with software partners from the AM sector (e.g. Oqton or Materialise,) offers fast and straightforward integration of our systems.

**OPC UA**
DyeMansion
Data Connect

DATA CONNECT ACCESS LEVEL

Data Connect offers full access levels to one Machine.



PREMIUM ACCESS

- ✓ Enables the customer to access full machine data via OPC UA:
 - ✓ Machine Status
 - ✓ Process Information (actual program information, process setup, etc.)
 - ✓ Machine Information
 - ✓ Sensor and Actor Information

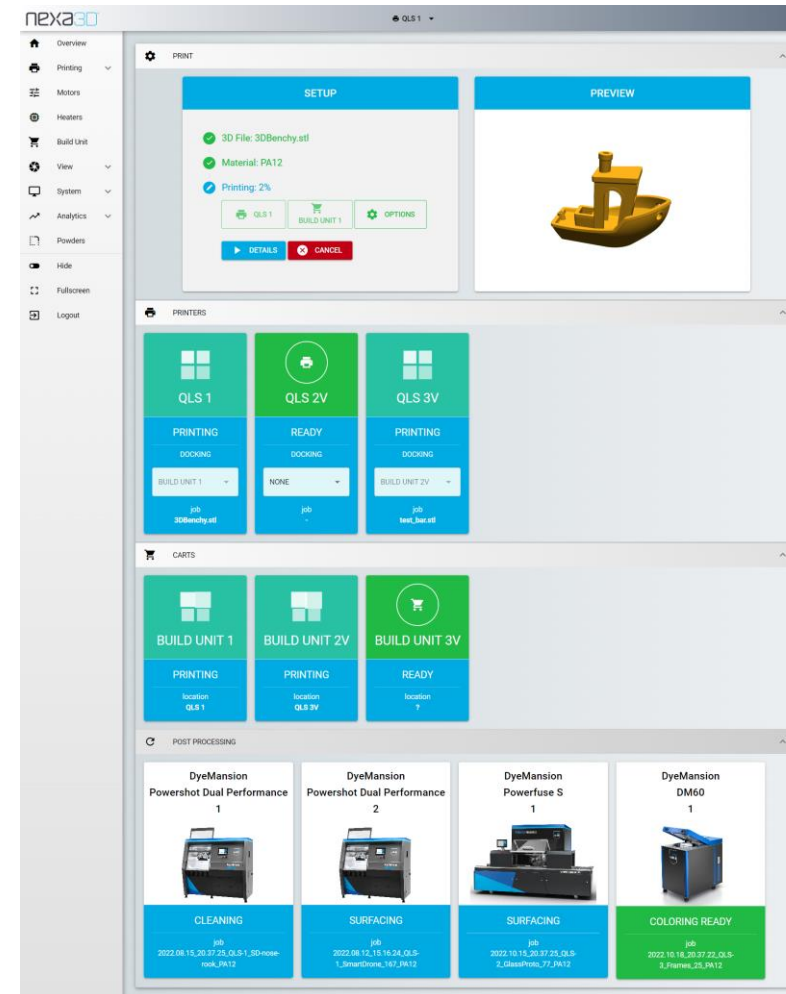


DATA CONNECT USE CASES AM SOFTWARE

- ✓ Dashboard visualization showing key metrics.
- ✓ Production planning with a scheduler.



Machine monitoring and production scheduling with NEXA3D.



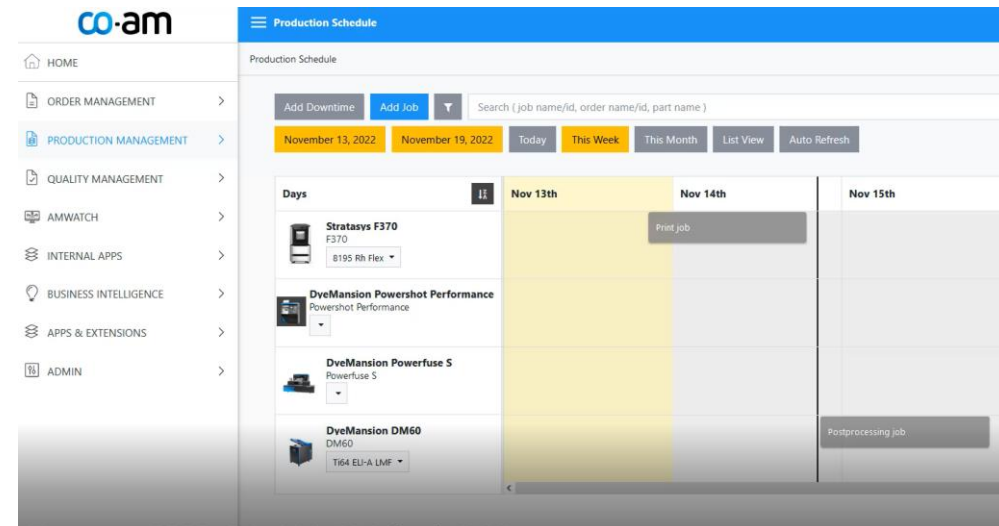
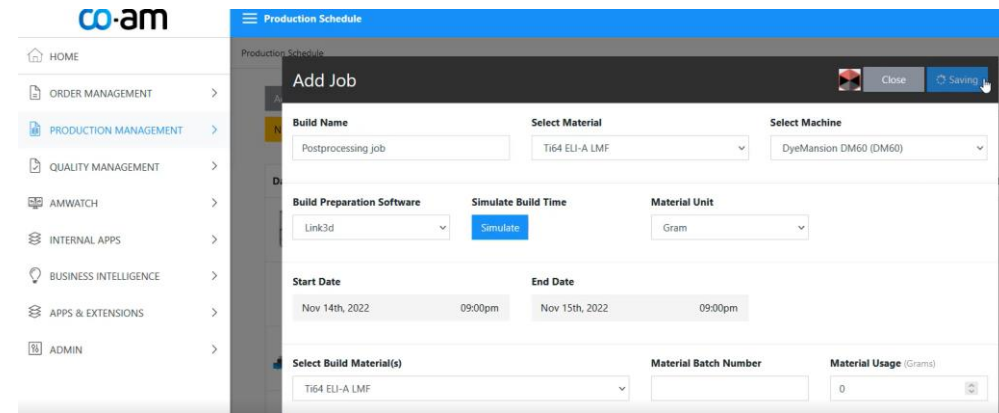


DATA CONNECT USE CASES AM SOFTWARE

- ✓ Dashboard visualization showing key metrics.
- ✓ Production planning with a scheduler.
- ✓ Allows integration of 3-party software like our Workflow Center or direct data connectivity via Data Connect.

materialise co-am
software platform

Machine monitoring and production scheduling with CO-AM from Materialise.



DATA CONNECT USE CASES AM SOFTWARE

- ✓ Machine Health dashboard focusing on sensor values.
- ✓ Creation of output production reports and raw data.
- ✓ Run rule analytics to ensure process consistency over time and between runs.
- ✓ Manual or automatic upload of DyeMansion logfiles possible.

Process monitoring with PrintRite3D Machine Health Features from Sigma Additive Solutions.



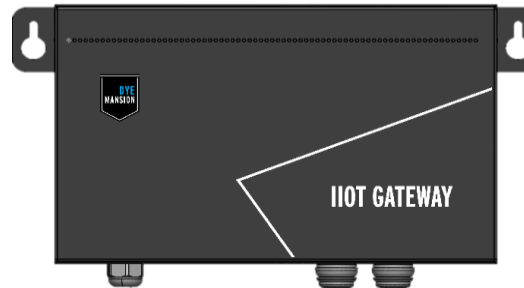
360° DIGITAL SERVICES HARDWARE IMPLEMENTATION

There are retrofits for the DM60 and the Powerfuse S necessary.



DM60

- ✓ Outside of the electrical cabinet.
- ✓ No technician is needed.
- ✓ Every DM60 needs an IoT gateway and the latest software update.



POWERSHOT PERFORMANCE / POWERFUSE S

- ✓ Inside the electrical cabinet
- ✓ Preferably installed by customers.
- ✓ Every Powerfuse S and Powershot Performance needs an IoT gateway and the latest software update.





DYEMANSION 360° DIGITAL SERVICES

GET IN TOUCH WITH US!



www.dyemansion.com



@WeAreDyeMansion



DyeMansion



DyeMansion



@WeAreDyeMansion



DyeMansion



DYEMANSION
GMBH

hello@dyemansion.com

+49 89 4141705 00

DyeMansion GmbH
Robert-Koch-Straße 1
82152 Planegg, Munich



DYEMANSION
NORTH AMERICA INC.

hello@dyemansion.com

+1 737 205 5727

DyeMansion North America Inc.
4020 S. Industrial Drive, #160
Austin, TX, 78744
United States